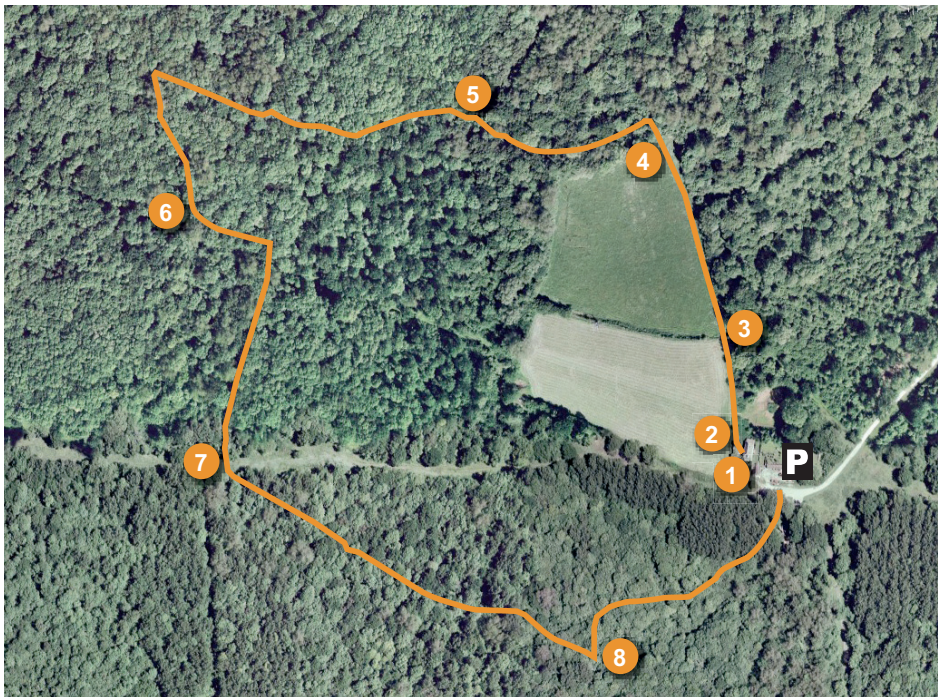


Lower Woods *for ancient woodland walks and meadow flowers*



OS grid ref: ST746 882

Walk details

duration: 1.5 hrs

grade: easy

Key to map

- walk
- 1 point of interest
- reserve boundary
- P** car park

scale

100m

Look out for...



Spindle berries



Dormouse



Common spotted orchid

This woodland is owned by our neighbouring Gloucestershire Wildlife Trust but jointly managed by both of us. It is a very large reserve with 23 woods and coppices separated by ancient grassy trenches and rides. Two clearly waymarked walks start from the Lodge.

Stanley Walk (red waymarks 1-20) is the easiest and starts at the gate (1) into the meadow (2) and follows the woodland rides. In April and May the route is flanked with carpets of bluebells.

At (3) you pass through Stanley Orchard and on to a small hunting gate (4) a reminder that hunting has taken place in Lower Woods from early times. At (5) note a large poplar grown to replace ancient oaks felled for timber during the second world war. The Walk (6) was created in the 1690s with a clear view to Wickwar Church. Go through Little Stanley Wood and cross the ancient Plumber's Trench (7). This area is full of butterflies and meadow flowers such as common spotted orchid in summer. In East Stanley Wood the 'island' (8) is also rich in wildflowers, including autumn crocus.

How to get there

Lower Woods are about a mile east of Wickwar. Main vehicular access to parking at Lower Woods Lodge, via a track off the Wickwar to Hawkesbury road.

Access

Mainly level and on grass, but puddles likely.

Why don't you... listen out for nightingales in May?