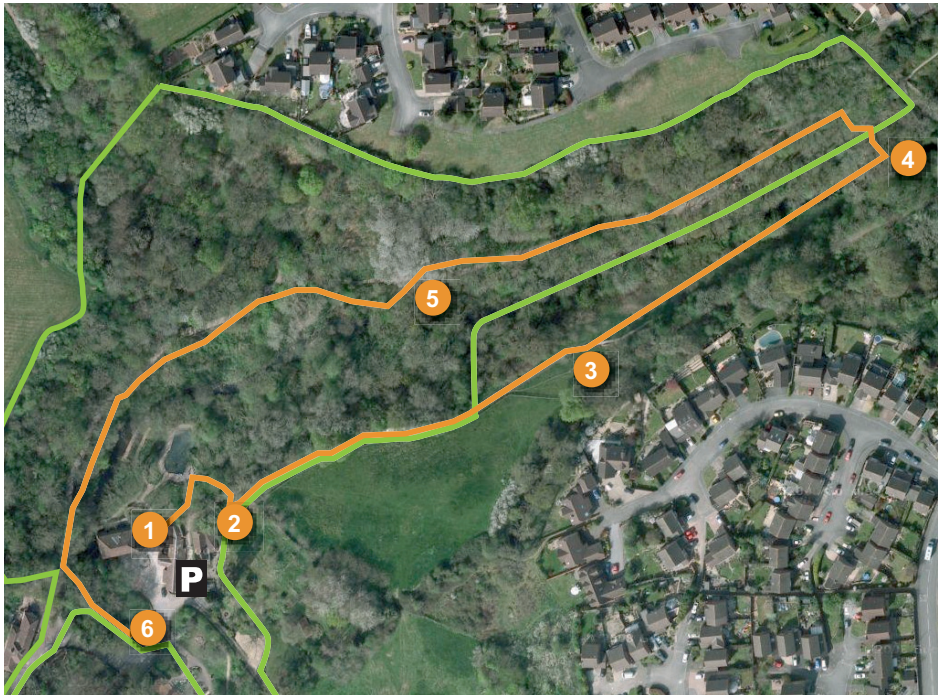


# Willsbridge Valley *for streamside wildlife and a sculpture trail*



OS grid ref: ST665 708

Walk details

duration: 1.5 hrs

grade: easy

Key to map

 walk

 point of interest

 reserve boundary

 car park

scale

 50m

## Look out for...

Start at the entrance of the Mill **(1)** and climb the flight of steps up to the teaching pond. Continue along the path with the pond to your left and after 10 metres turn sharp left onto the Heritage Sculpture Trail and through a field gate **(2)**. Follow the surfaced path up the gradient that leads between the woodland edge and the pasture.

Past the giant anthill sculpture on your right go through an opening onto the old dramway **(3)**. Turn left and continue along the track – look out for the sculptures celebrating the valley’s industrial history. After about 100 metres turn left over the viaduct **(4)**. Turn left again once you have crossed the bridge, and the path leads you back to the mill alongside the Siston Brook where you may see dippers or even a kingfisher. Look out for the old quarry with fossil remains of club mosses **(5)**.

Back at the Mill explore the Wild Waste Garden **(6)**, which demonstrates how household waste can be put to creative use.

### How to get there

Take the A431 Bristol to Bath road, turning into Long Beach Road. Car park on left.

### Access

Wheelchair access via Willsbridge Hill to most of valley.



Dipper



Brimstone



Frog

**Why don't you...** go pond dipping and discover the watery world of the mill pond?