

BS3 Moths

IDENTIFICATION, RECORDING & COMMUNITY
ENGAGEMENT: GORES MARSH PARK & BEYOND



The project

A wildlife project with 2 goals: To identify and record the moth species living in the Gores Marsh Park area and to give locals the chance to experience moth trapping in their own gardens.



Light trap used: Robinson 125w Mercury Vapour bulb

Moths. The unsung heroes of the natural world. While butterflies are celebrated for their colours and bees for their pollinating powers, moths can truly match a butterfly's beauty and rival a bee's work ethic. Like bees and butterflies, moths are living right here with us in our gardens and green spaces, you just have to look a little harder to find them. One invaluable tool that makes that task a whole lot easier is a Moth Light Trap (left).

The BS3 Wildlife Group has 3 moth traps available for loan (2 x Skinner and 1 x Robinson (pictured left)). The Robinson trap has spent the season with Charlie Tallis, who has been regularly light-trapping in her garden, which backs onto Gores Marsh Park in Ashton, BS3, Bristol.



Elephant Hawk and Eyed Hawk moths sharing an egg box with a Large Yellow Underwing and a Bird Cherry Ermine

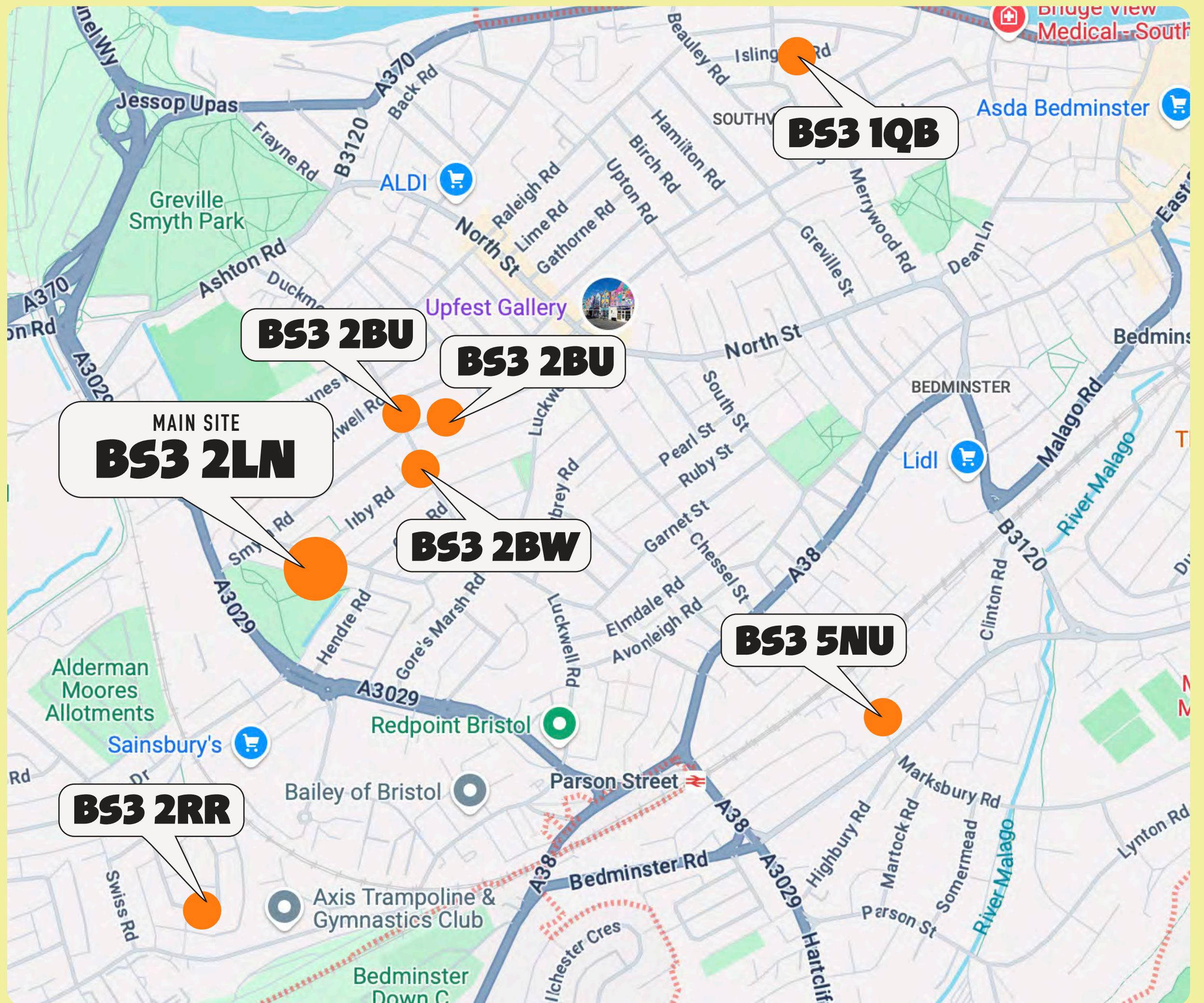
In addition to using the trap in her own garden, Charlie has taken it to the gardens of other BS3 Wildlife Group members eager to try mothing themselves! These sessions took place every one to two weeks from April to October 2024, despite a rather wet and chilly summer.

Through this project, we've gained valuable insight into the moth species around Gores Marsh Park but have also offered the community an up-close look at the stunning moths of BS3. It has been lovely to see children of all ages as they hold a moth for the first time. Kids in cities especially, should be given every opportunity possible to interact with local wildlife, and moths are the perfect, docile candidates!

This report aims to share the total numbers of moth species and individuals so we have some data to analyse and compare, but also celebrate the vibrant diversity and beauty of the marvellous moths of BS3!

NOTE: THE FOCUS HAS BEEN ON MACRO MOTH SPECIES. ALL PHOTOS IN THIS REPORT WERE TAKEN DURING THE MORNING MOTHING SESSIONS, ON AN IPHONE. ALL DATA WILL BE SUBMITTED TO BRERC.

WHERE?



BS3 2LN



Garden guests

We might live in a major UK city, but it's no wonder these moths are living among us – just look at some of the lush gardens at the locations visited...

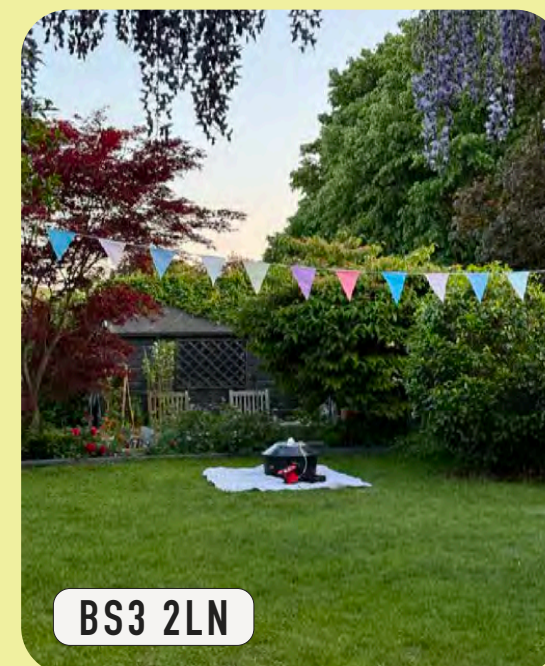
BS3 2BU



BS3 2BU



BS3 2LN



BS3 2RR

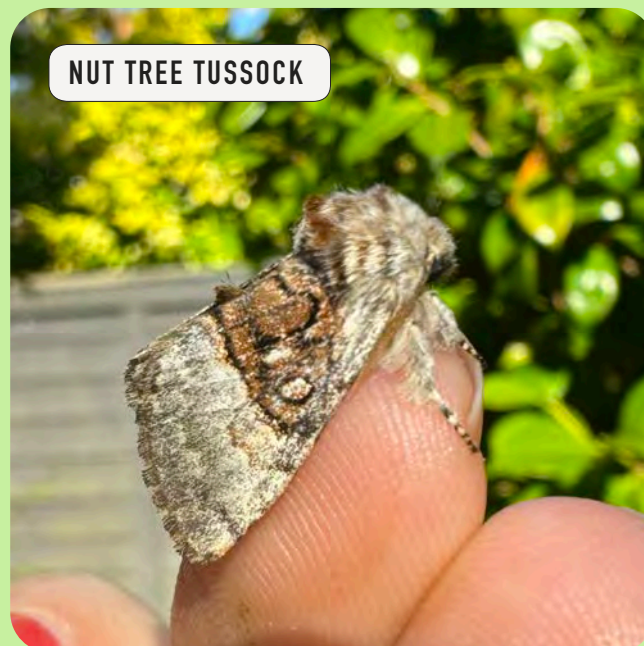


BS3 5BU



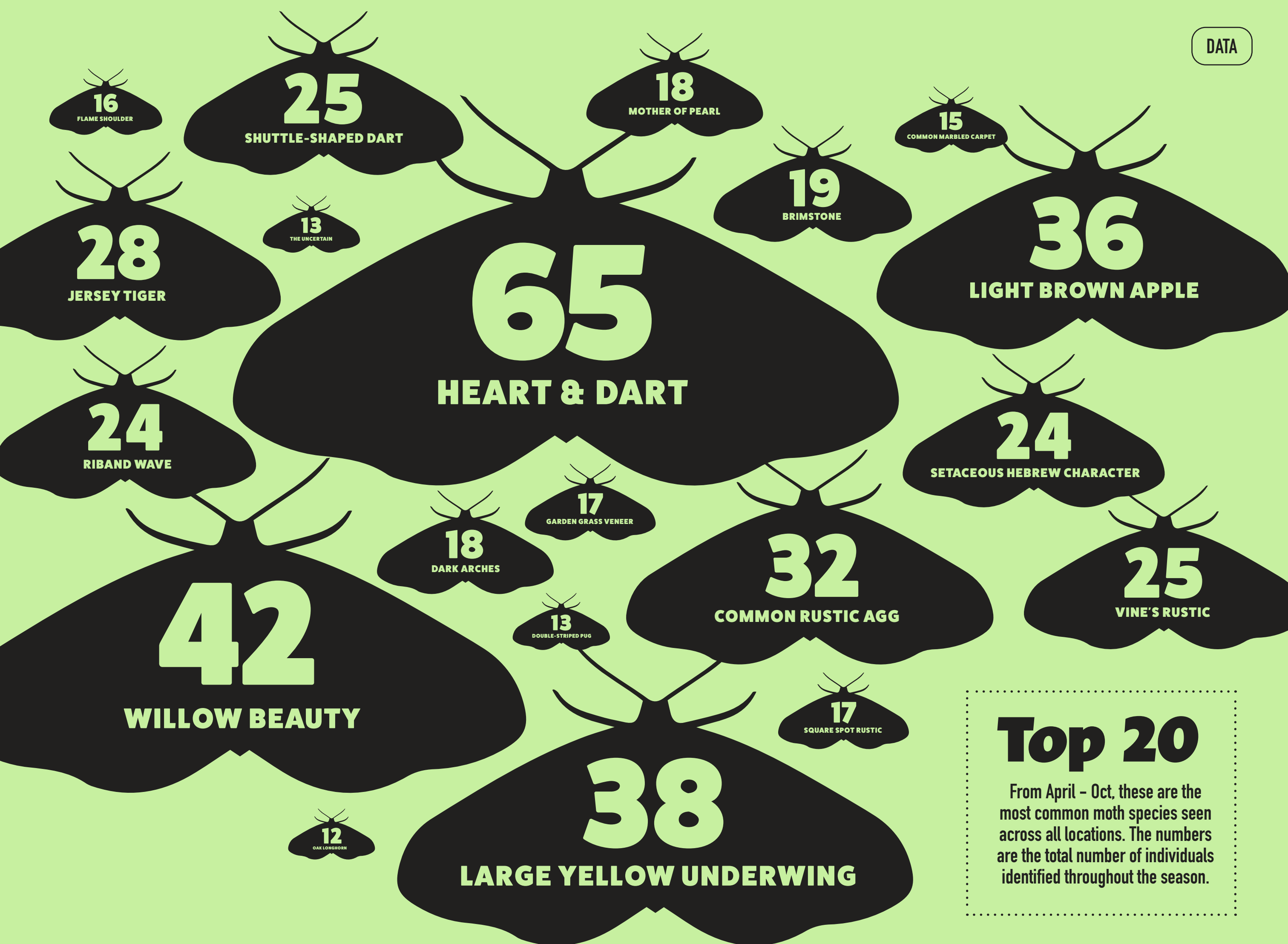
TOTAL SPECIES

174



TOTAL INDIVIDUALS

973



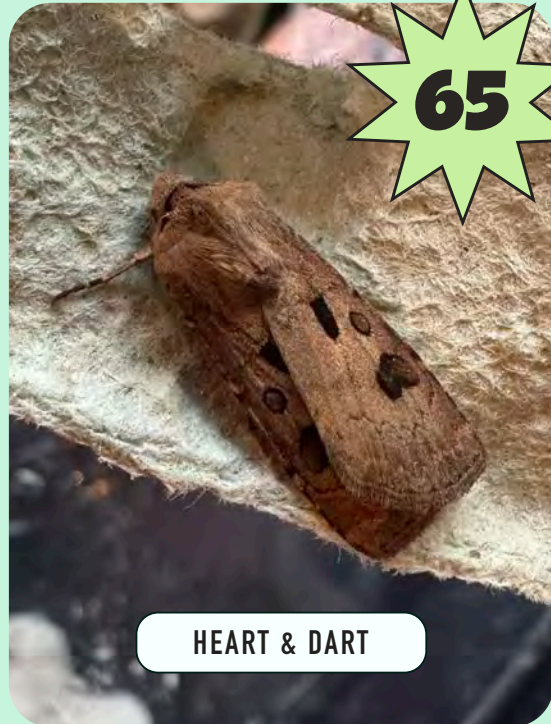
Top 20

From April - Oct, these are the most common moth species seen across all locations. The numbers are the total number of individuals identified throughout the season.

TOP 10

Let's take a look at some pics of the top 10 species seen across all locations.

65



HEART & DART

42



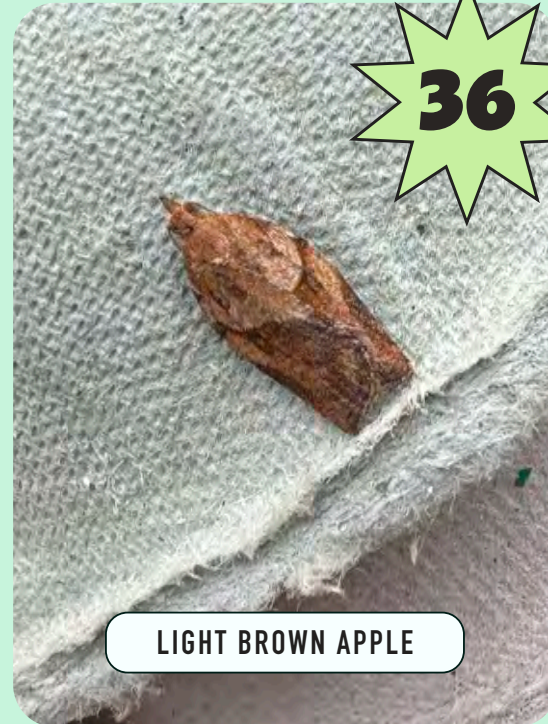
WILLOW BEAUTY

38



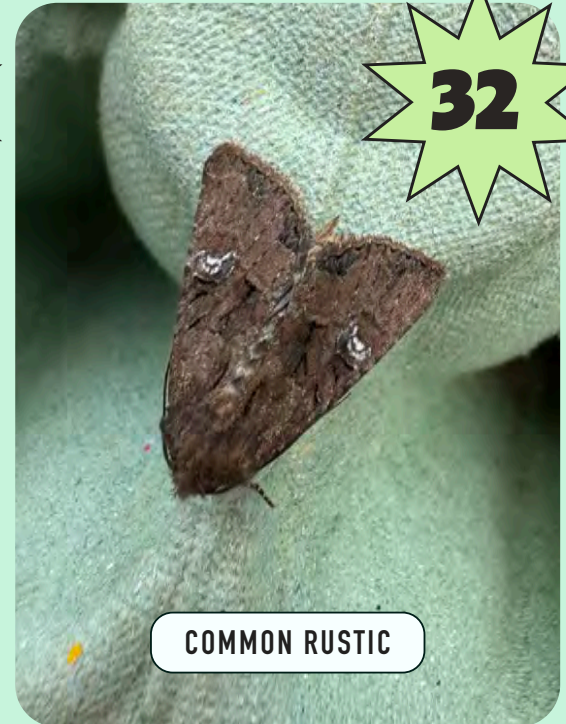
LARGE YELLOW UNDERWING

36



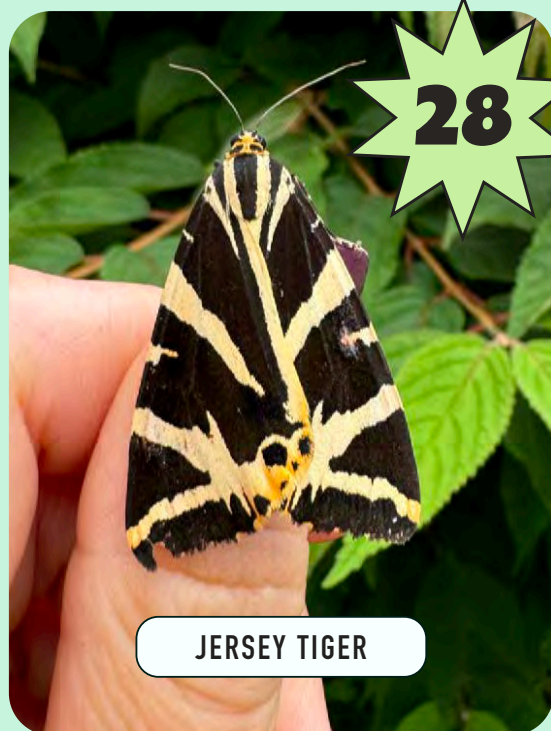
LIGHT BROWN APPLE

32



COMMON RUSTIC

28



JERSEY TIGER

25



BIRD CHERRY ERMINE

25



SHUTTLE-SHAPED DART

25



VINE'S RUSTIC

24



RIBAND WAVE

**I've been blown
away by the
variety and
beauty of local
moth species**

SARAH BREAUX – BS3 WILDLIFE GROUP MEMBER

BS3 GIANTS



LIME HAWK : 3



ELEPHANT HAWK : 8



PEPPERED : 2



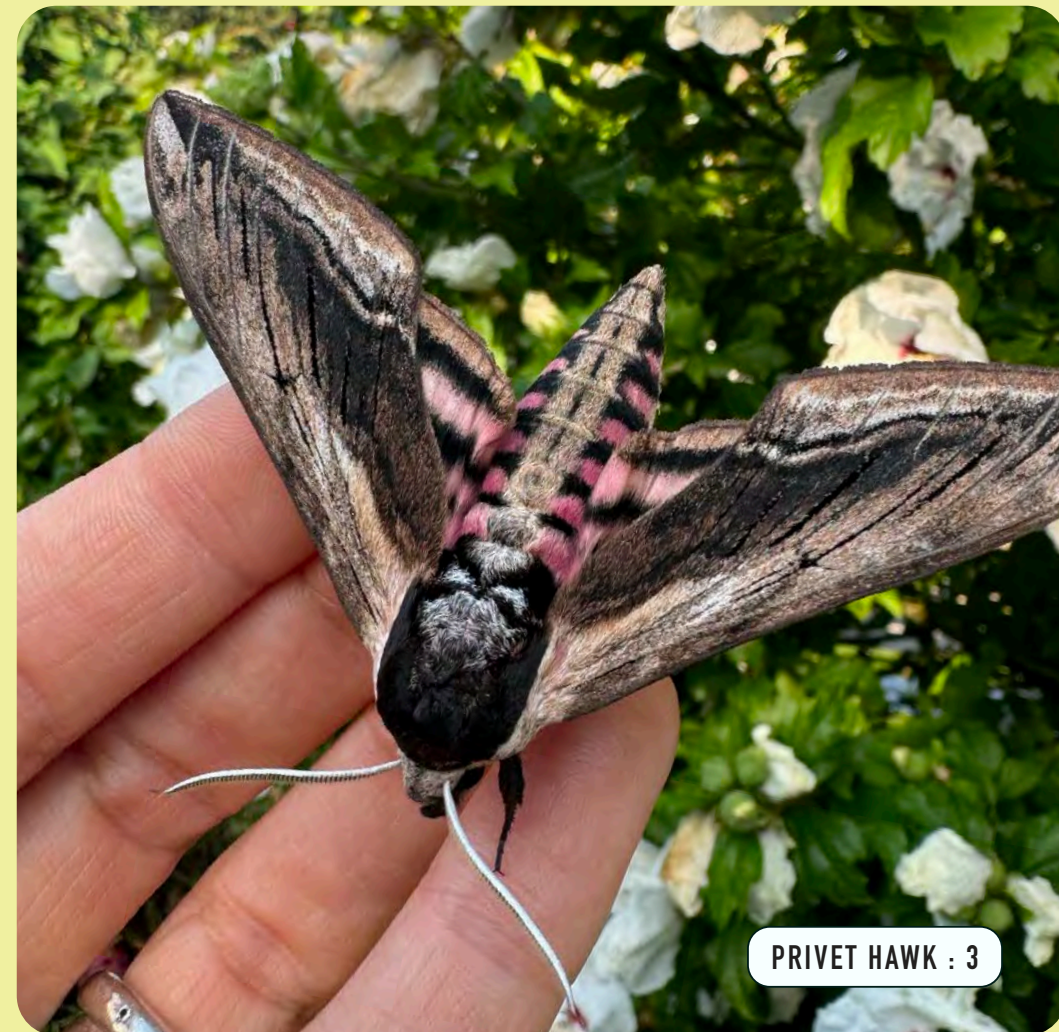
SWALLOW PROMINENT : 1



POPLAR HAWK : 2



EYED HAWK : 2



PRIVET HAWK : 3



LIME HAWK : 3

**It's such a
genuine privilege
to interact with
these beautiful,
concealed members
of local wildlife.**

CHARLIE TALLIS – BS3 WILDLIFE GROUP MEMBER



CINNABAR : 8



CANARY SHOULDERED
THORN : 1



COMMON EMERALD : 4



ELEPHANT HAWK : 8

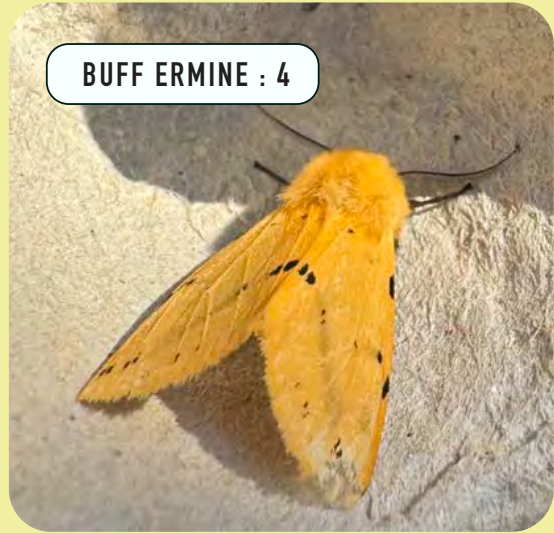


ROSY FOOTMAN : 3

GROUPS



SALLOW KITTEN : 1



BUFF ERMINE : 4



JERSEY TIGER : 28

RAINBOWS AFTER DARK*



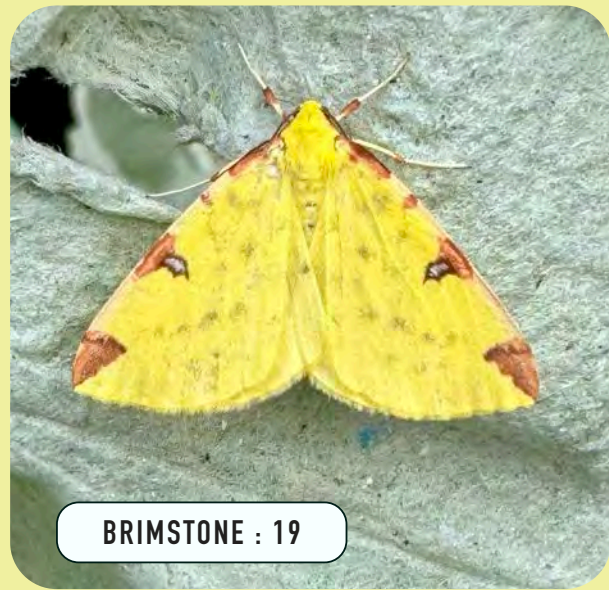
SMALL MAGPIE : 8



LIGHT EMERALD : 5



BLACK ARCHES : 1



BRIMSTONE : 19



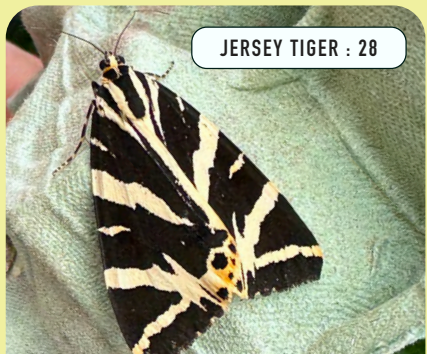
BLOOD VEIN : 2



SCALLOPED OAK : 1



PEARL GRASS : 1



JERSEY TIGER : 28

*WELL, MOSTLY, SOME ARE DAY FLYERS :)

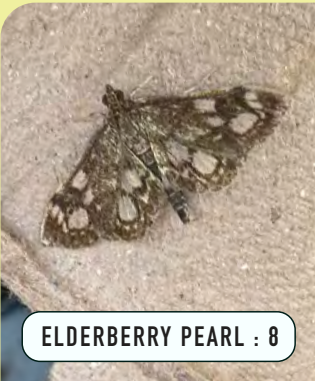
**It's lovely to be
able to observe
and record
moths without
hurting them**

LUCY CONROY – BS3 WILDLIFE GROUP MEMBER

GROUPS



BROWN ISN'T BORING



**I find
first-hand nature
experiences
bring such
a buzz for life**

SALLY IMBERT – BS3 WILDLIFE GROUP MEMBER



ORANGE SWIFT : 7



PEBBLE HOOK TIP : 7



NUT TREE TUSOCK : 6



AUGUST THORN : 3



DARK SPECTACLE : 3



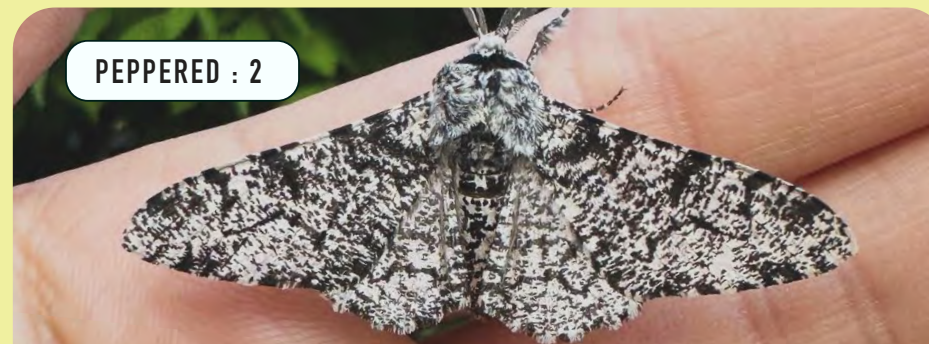
TREBLE BROWN SPOT : 2



BUFF TIP : 2



LIME SPECK PUG : 6



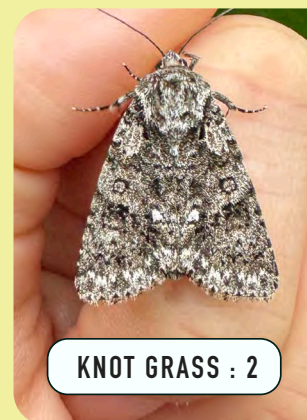
PEPPERED : 2



MOTTLED BEAUTY : 1



PALE PROMINENT : 2



KNOT GRASS : 2



BRINDLED BEAUTY : 2



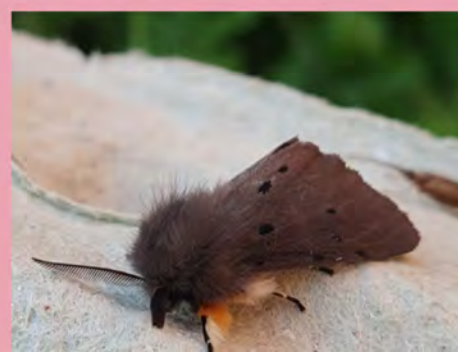
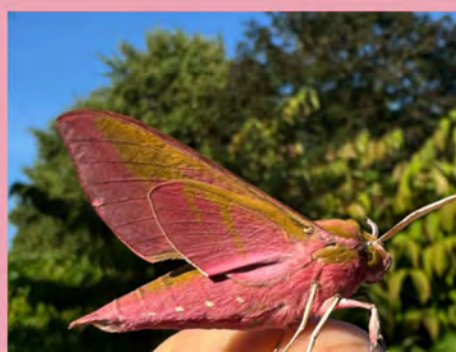
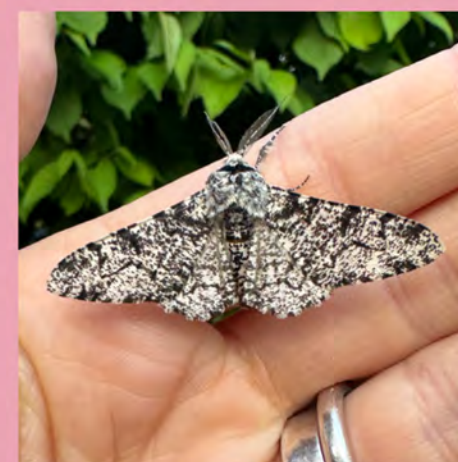
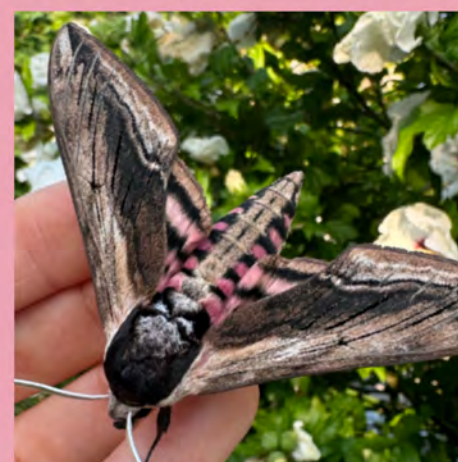
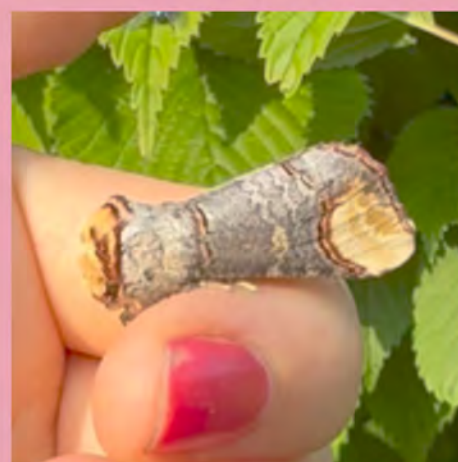
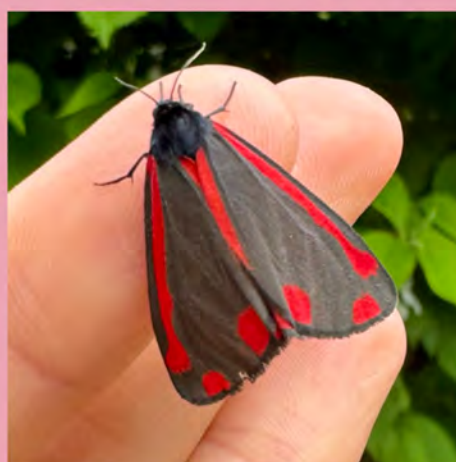
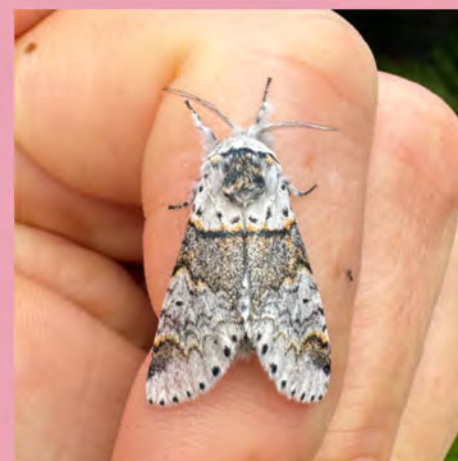
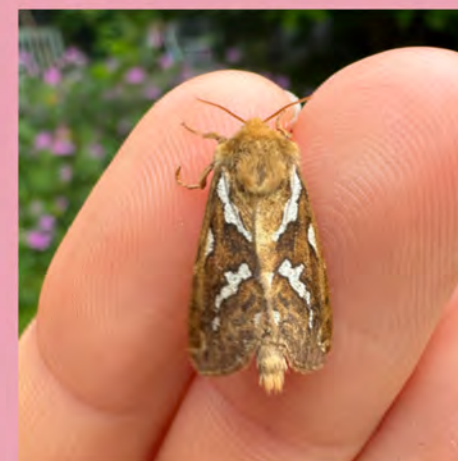
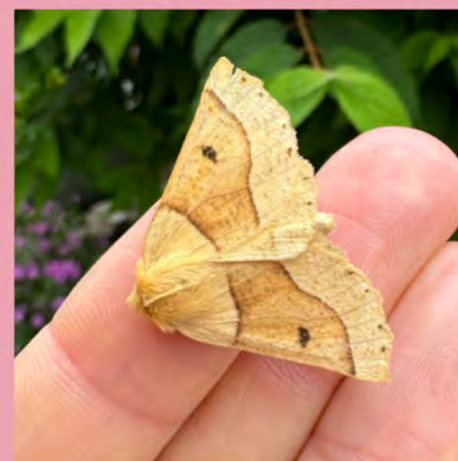
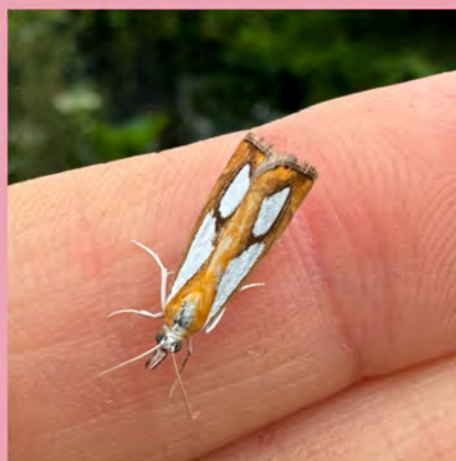
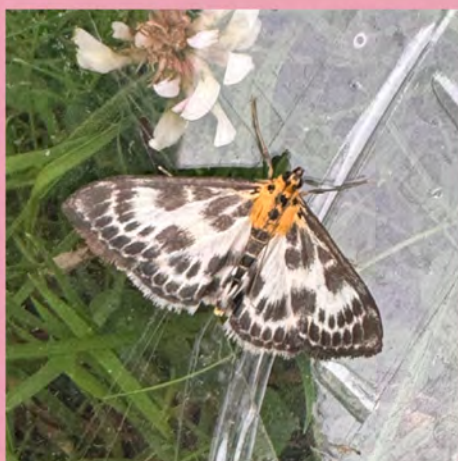
DARK/GREY DAGGER : 3



GARDEN CARPET : 11

GROUPS

MASTERS OF DISGUISE





SPREAD THE LOVE

Moths are often misunderstood and feared, even by those who have rarely encountered them. By travelling around BS3 with the light trap, we've been able to connect people with these beautiful, diverse and fascinating creatures. It has been wonderful to see faces light up as the egg boxes are turned.





FOR THE KIDS

It's vital to instil kids with a sense of connection and love for the natural world – especially in the city. The little people of BS3 have loved getting up close and personal with our moth friends this year.



How can I attract more moths into my garden?

BE SURE TO CONSIDER FOOD PLANTS FOR CATERPILLARS AS WELL AS ADULT MOTHS, THERE ARE SOME IDEAS ON THIS PAGE BUT IF YOU KEEN TO ATTRACT A SPECIFIC MOTH – GOOGLE IS YOUR FRIEND. LEAVE LEAF AND PLANT LITTER SO OVERWINTERING MOTHS ARE LEFT UNDISTURBED TOO.

CATERPILLAR FOOD PLANTS:



COMFREY



IVY



NETTLE

Even a few pots or a window box will do wonders!



SWEET ROCKET



JASMINE



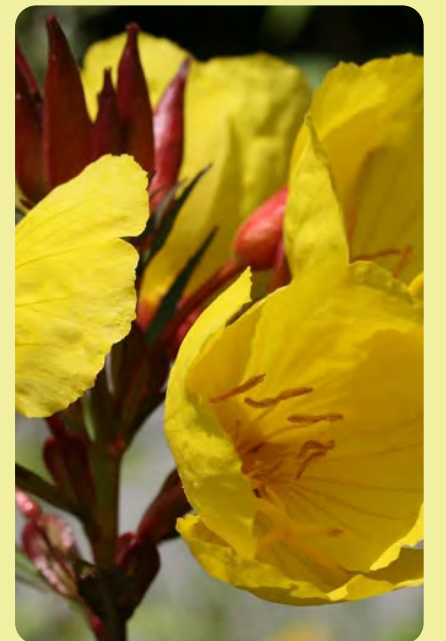
HONEYSUCKLE



LADY'S BEDSTRAW



FOXGLOVES



EVENING PRIMROSE

[illegible]

Continued...

Species	19/04/24 BS3 2LN	07/05/24 BS3 2LN	08/05/24 BS3 5NU	11/05/24 BS3 2LN	20/05/24 BS3 2LN	24/05/24 BS3 2LN	30/05/24 BS3 2BU	31/05/2024 BS3 2LN	06/06/24 BS3 2RS	12/06/24 BS3 2LN	13/06/24 BS3 1QB	17/06/24 BS3 2LN	19/06/24 BS3 2LN	03/07/24 BS3 2LN	11/07/2024 BS3 2LN	14/07/24 BS3 2LN	20/07/24 BS3 2LN	24/07/24 BS3 2BU	26/07/2024 BS3 2LN	30/07/2024 BS3 2LN	10/08/2024 BS3 2LN	15/08/2024 BS3 2LN	18/08/2024 BS3 2LN	19/08/2024 BS3 5NU	29/08/24 BS3 2BW	15/09/2024 BS3 2LN	29/9/2024 BS3 2LN	24/10/24 BS3 2LN	TOTAL	
Heart and Dart				1	2	8	12	15	4	3	3	2	3	3	2	1	3				1		1	1						65
White Shouldered House		2		7	8	2	1	2	1			1	1	1	1					1		1		2	2	1	1			42
The Clay															3					1					2	1	2			4
Angle Shades				1																				1				1		3
August Thorn															1	1							1					1		3
Black-fronted Straw (Cochylis atricapitana)			1	1					1																					3
Box Tree														1							2									3
Brown House													1	1						1										3
Buff Arches													1	1			1													3
Common Carpet			1				1							1			1													3
Dark Spectacle			1			1											1													3
Dark/grey Dagger																	1		1	1										3
Dusky Pearl (Udea Prunalis)															1		1				1									3
Heart & Club										1											2									3
Lime Hawk	1				2																									3
Maple Pug																	1	1		1										3
Marbled Minor					1				1	1										1										3
Muslin			2	1																										3
Peppered				1	1									1																3
Privet Hawk																	1	1			1									3
Rosy Footman																		1		1				1						3
Ruby Tiger																		1		2										3
Treble Lines					1	2																								3
Turnip		1																					1	1						3
Twenty Plume			1														1	1												3
White Shouldered House	1							1										1												3
Beautiful Hook-tip							1							1																2
Blood-vein																							1	1						2
Brindled Beauty	2																													2
Buff Tip				2																										2
Common Grey (Scoparia ambigualis)		1													1															2
Common Pug					2																									2
Common Quaker																							1	1						2
Common Swift								1					1																	2
Common White Wave									1													1								2
Dun-bar																				1		1								2
Eyed Hawk													1				1					1								2
Garden Pebble																							2							2
Green Pug							1					1																		2
Iron Prominent																	1	1												2
Knot Grass							1																1							2
Lunar Underwing																										1	1			2
Mint																				1	1							1	1	2
Pale Mottled Willow									2																					2
Pale Prominent																	1			1										2
Red Barred Tortrix							1						1																	2
Rustic Shoulder Knot			1		1																									2
Small Dusty Wave							1																1							2
The Coronet															1						1									2
Treble Brown Spot							1							1																2
Yellow Shell																						1		1						2
Poplar Hawk									1				1																	2
Barred Marble							1																							1
Beautiful Plume																						1								1
Black Arches																					1									1
Black Cloak (Notocelia Cynobatella)					1																1									1
Broad-bordered yellow Underwing																											1			1
Canary-shouldered Thorn																	1													1
Carnation Tortrix																									1					1

Continued...

[illegible]

Any questions please reach out to Charlie Tallis

.....

Email: bs3mothclub@mail.com

Instagram: @bs3mothclub